



## A LOW-WATER-USE GARDEN FOR WILDLIFE HABITAT

*This landscape design is an example of a space that can be certified as a wildlife habitat through the National Wildlife Federation.*



### HABITAT GARDEN CONCEPT

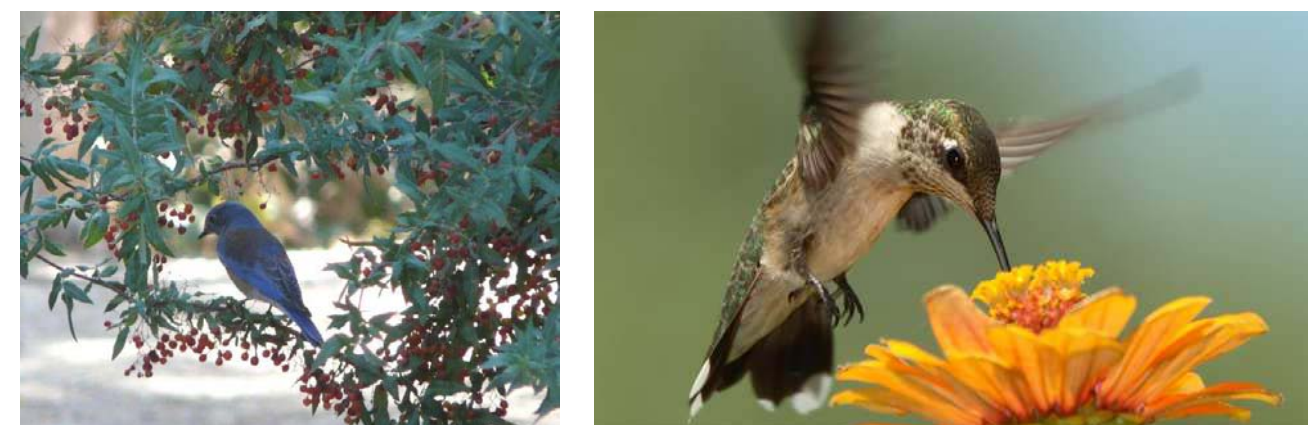
*This landscape design represents a typical native/habitat garden for San Diego County homeowners. The elements in this garden are intended to provide food, water, shelter, and places to raise young for native birds and/or other wildlife. The majority of plants are selected for their attractive qualities, as well as their ability to attract to birds, hummingbirds, butterflies, and other wildlife species. Low water use and California native plants dominate the garden and contribute to the health of the soil, air, and water for this habitat garden. Patios and a shade trellis provide comfortable seating areas for enjoyment of the garden.*

*There is a large diversity of plants shown on this plan and it is not intended that all of these plants be used in the garden. Plants may be selected or removed from this list in quantities at the homeowner's discretion. Appropriate sun/shade requirements, spacing/size, and irrigation zoning for each plant species should remain consistent.*



### PLACES TO RAISE YOUNG

*In order to provide complete habitat, you must provide places for wildlife to engage in courtship behavior and to mate, and then to bear and raise their young. This garden design provides nesting boxes, host plants for caterpillars, and dense shrubs.*



### FOOD SOURCES

*Plants provide the basic foods for wildlife. Feeders can be used as a supplemental source of food. Remember that some creatures will become food for others in a balanced habitat. Encourage a natural diversity of wildlife in your yard to ensure a healthy ecosystem. This garden design provides seed, berries, nectar, foliage, fruits, and pollen.*



### SUSTAINABLE GARDENING PRACTICES

*How you manage your garden or landscape can have an effect on the health of the soil, air, water, and habitat for native wildlife - as well as the human community. This garden design employs sustainable gardening techniques such as water-wise landscaping, drip irrigation, limiting water use, use of native plants, no lawn areas and a compost bin.*



### WATER SOURCES

*Wildlife need a clean water source for drinking and bathing. This garden design provides a bird bath / water feature to serve these needs.*

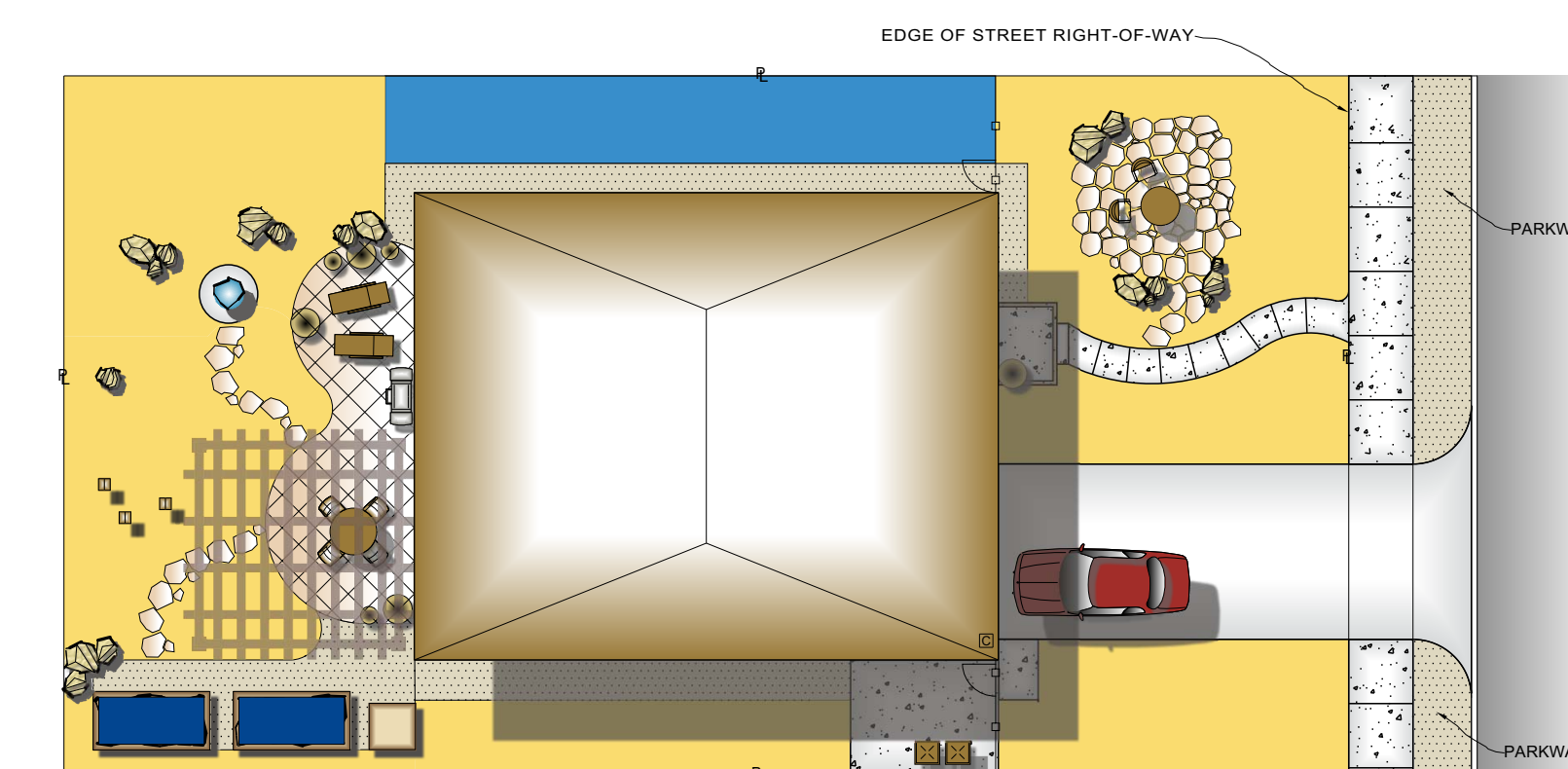


### PLACES FOR COVER

*Wildlife need places to find shelter from the weather and from predators. This garden design provides ground covers, rock boulder piles, birdhouses, and dense shrubs as means for cover.*

### HYDROZONE PLAN

*This landscape design has been carefully designed with plant material watering requirements considered. Plants are grouped together based on water use characteristics, sun/shade environmental conditions, and then irrigated on separate valves by "hydrozone."*



### IRRIGATION SCHEDULE

SYMBOL	DESCRIPTION
LOW	LOW WATER HYDROZONE
MODERATE	MODERATE WATER HYDROZONE
HIGH	HIGH WATER HYDROZONE

Resource: National Wildlife Federation - <http://www.nwf.org/Get-Outside/Outdoor-Activities/Garden-for-Wildlife.aspx>

#### SCHMIDT DESIGN GROUP, INC.

BALANCING ARTISTIC EXPRESSION IN DESIGN  
WITH ENVIRONMENTAL SENSITIVITY

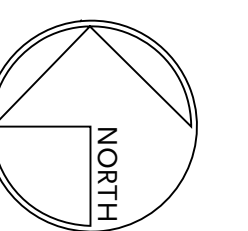
2655 Fourth Avenue, San Diego, CA 92103  
telephone [619] 236-1462 facsimile [619] 236-8792  
[www.schmidtsg.com](http://www.schmidtsg.com)

Lic. CA 2138, NV 219, AZ 34139

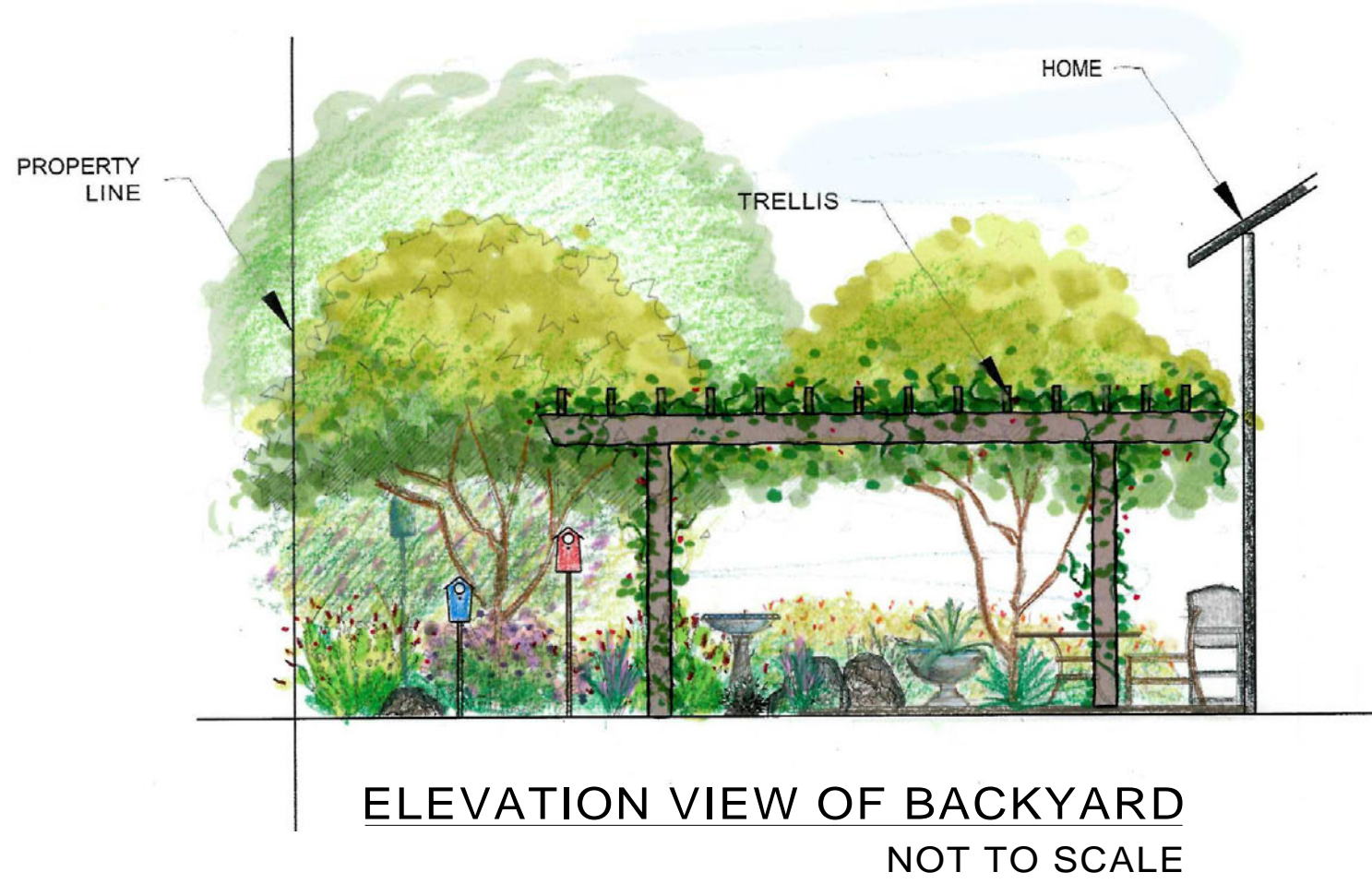
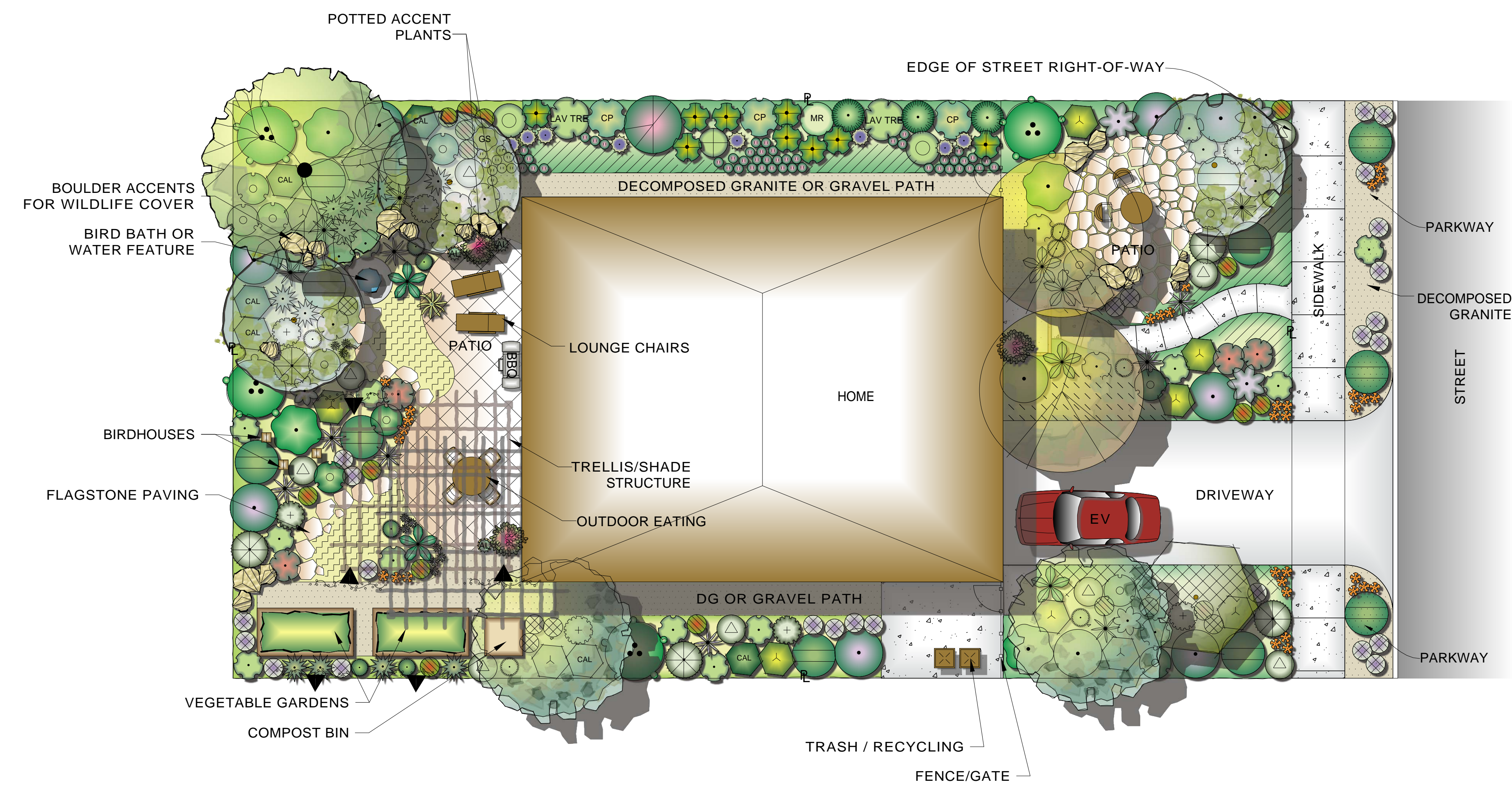
# NATIVE / HABITAT LANDSCAPE CONCEPT

## TYPICAL WATER SMART HOME LANDSCAPING PLAN

### SAN DIEGO







PLANT SCHEDULE

TREES	BOTANICAL NAME	COMMON NAME	QTY	HYDROZONE
	<i>Cercis occidentalis</i>	Western Redbud	1	LOW
	<i>Chilopsis linearis</i>	Desert Willow	2	LOW
	<i>Chitalpa tashkentensis</i> 'Pink Dawn'	Pink Dawn Chitalpa Bush	3	LOW
	<i>Parkinsonia hybrid</i> 'Desert Museum'	Desert Museum Palo Verde	2	LOW
	<i>Quercus agrifolia</i>	Coast Live Oak	1	LOW

PLANT SCHEDULE (Continued)

SHRUBS	BOTANICAL NAME	COMMON NAME	QTY	HYDROZONE
	<i>Agave americana</i> 'Variegata'	Variegated Century Plant	1	LOW
	<i>Agave attenuata</i>	Agave	6	LOW
	<i>Aloe</i> x 'Blue Elf'	Aloe	3	LOW
	<i>Arctostaphylos</i> x 'Sunset'	Sunset Manzanita	12	LOW
	<i>Artemisia californica</i> 'Montara'	Prostrate California Sagebrush	7	LOW
	<i>Bougainvillea</i> x 'Raspberry Ice'	Bougainvillea	3	LOW
	<i>Calliandra californica</i>	Red Baja Fairy Duster	6	LOW
	<i>Ceanothus thyrsiflorus</i> 'Skylark'	Skylark Ceanothus	10	LOW
	<i>Ceanothus</i> x 'Concha'	California Lilac	4	LOW
	<i>Coleonema pulchrum</i>	Pink Breath Of Heaven	3	MODERATE
	<i>Diets bicolor</i>	Fortnight Lily	11	LOW

SCHEDULE (Continued)

SHRUBS	BOTANICAL NAME	COMMON NAME	QTY	HYDROZONE
	<i>Diplacus puniceus</i>	Red Monkeyflower	11	LOW
	<i>Eriogonum grande rubescens</i>	Red Buckwheat	11	LOW
	<i>Eschscholzia californica</i>	California Poppy	34	LOW
	<i>Galvezia speciosa</i>	Island Bush Snapdragon	4	LOW
	<i>Gaura lindheimeri</i> 'Siskiyou Pink'	Siskiyou Pink Gaura	1	MODERATE
	<i>Hesperaloe parviflora</i>	Red Yucca	7	LOW
	<i>Heuchera sanguinea</i> 'Firefly'	Coral Bells	55	MODERATE
	<i>Lavandula stoechas</i>	Spanish Lavender	30	LOW
	<i>Lavatera maritima</i>	Tree Mallow	2	MODERATE
	<i>Leymus condensatus</i> 'Canyon Prince'	Native Blue Rye	1	MODERATE
	<i>Mahonia aquifolium</i> 'Compacta'	Compact Oregon Grape	9	MODERATE
	<i>Muhlenbergia lindheimeri</i>	Lindheimer's Muhly	2	MODERATE
	<i>Muhlenbergia rigens</i>	Deer Grass	1	MODERATE
	<i>Oenothera speciosa</i>	Mexican Evening Primrose	9	LOW
	<i>Penstemon heterophyllus</i> 'Margarita BOP'	Beard Tongue	8	MODERATE
	<i>Penstemon spectabilis</i>	Showy Penstemon	8	LOW
	<i>Ribes sanguineum glutinosum</i>	Red Flowering Currant	3	MODERATE
	<i>Ribes speciosum</i>	Fuchsia Flowering Gooseberry	1	MODERATE
	<i>Rosmarinus officinalis</i> 'Tuscan Blue'	Tuscan Blue Rosemary	9	LOW
	<i>Salvia apiana</i>	White Sage	5	LOW
	<i>Salvia clevelandii</i> 'Pozo Blue'	Cleveland Sage	8	LOW
	<i>Salvia greggii</i>	Autumn Sage	19	LOW
	<i>Salvia leucophylla</i>	Purple Leaf Sage	2	LOW
	<i>Zauschneria californica</i>	California Fuchsia	9	LOW
GROUND COVERS	BOTANICAL NAME	COMMON NAME	QTY	HYDROZONE
	<i>Arctostaphylos</i> x 'Emerald Carpet'	Emerald Carpet Manzanita	8@48'o.c.	LOW
	<i>Baccharis pilularis</i> 'Pigeon Point'	Coyote Brush	4@8'o.c.	LOW
	<i>Ceanothus</i> x 'Joyce Coulter'	Ceanothus Joyce Coulter	2@8'o.c.	LOW
	<i>Salvia</i> x 'Gracias'	Creeping Sage	3@5'o.c.	LOW
VINES	BOTANICAL NAME	COMMON NAME	QTY	HYDROZONE
	<i>Vitis californica</i> 'Roger's Red'	California Wild Grape	5	LOW

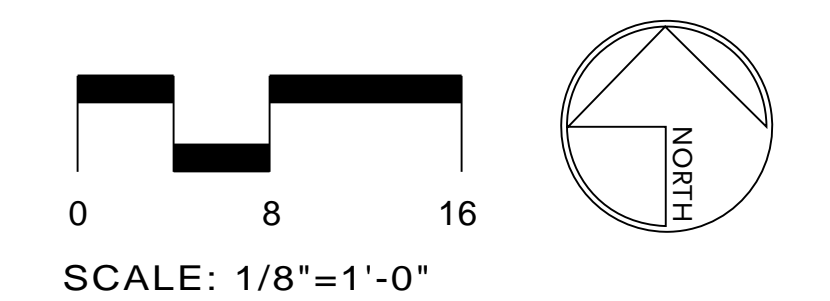
SEE SHEET 3 of 4 for Plant Photos

SCHMIDT DESIGN GROUP, INC.  
 BALANCING ARTISTIC EXPRESSION IN DESIGN  
 WITH ENVIRONMENTAL SENSITIVITY  
 2655 Fourth Avenue, San Diego, CA 92103  
 telephone (619) 236-1462 facsimile (619) 236-8792  
 www.schmidtsgroup.com  
 Lic. CA 2138, NV 219, AZ 34139

# NATIVE / HABITAT LANDSCAPE PLAN

## TYPICAL WATER SMART HOME LANDSCAPING PLAN

### SAN DIEGO







**CERCIS OCCIDENTALIS / WESTERN REDBUD**  
REMARKS: PROVIDES FOOD FOR BIRDS & WILDLIFE  
MATURE SIZE: 15'H x 15'W



**AGAVE AMERICANA 'VARIEGATA' / VARIEGATED CENTURY PLANT**  
REMARKS: POTTED ACCENT; SUCCULENT; YEAR-ROUND INTEREST  
MATURE SIZE: 6'H x 10'W



**CEANOTHUS X 'CONCHA' / CALIFORNIA LILAC**  
REMARKS: ATTRACTS BIRDS, BUTTERFLIES; FRAGRANT;  
EVERGREEN BACKGROUND; INFREQUENT WATERING  
MATURE SIZE: 7'H x 7'W



**HESPERALOE PARVIFLORA / RED YUCCA**  
REMARKS: EVERGREEN ACCENT  
MATURE SIZE: 3'H x 4'W



**OENOTHERA SPECIOSA / MEXICAN EVENING PRIMROSE**  
REMARKS: ATTRACTS HUMMINGBIRDS; ANNUAL COLOR  
MATURE SIZE: 1'H x 1.5'W



**SALVIA GREGGII / AUTUMN SAGE**  
REMARKS: ATTRACTS HUMMINGBIRDS  
MATURE SIZE: 3'H x 3'W



**CHILOPSIS LINEARIS / DESERT WILLOW**  
REMARKS: PROVIDES FOOD FOR BIRDS & WILDLIFE  
MATURE SIZE: 30'H x 30'W



**AGAVE ATTENUATA / AGAVE**  
REMARKS: ACCENT; SUCCULENT; YEAR-ROUND INTEREST  
MATURE SIZE: 5'H x 5'W



**COLEONEMA PULCHRUM / PINK BREATH OF HEAVEN**  
REMARKS: ATTRACTS BUTTERFLIES  
MATURE SIZE: 6'H x 5'W



**HEUCHERA SANGUINEA 'FIREFLY' / CORAL BELLS**  
REMARKS: PERENNIAL BORDER; SPRING/SUMMER BLOOM;  
ATTRACTS BUTTERFLIES AND HUMMINGBIRDS  
MATURE SIZE: 1.5'H x 1.5'W



**PENSTEMON HETEROPHYLLUS 'MARGARITA BOP' / MARGARITA BOP PENSTEMON**  
REMARKS: SHOWY JUNE PERENNIAL; ATTRACTS HUMMINGBIRDS AND BUTTERFLIES  
MATURE SIZE: 3'H x 2'W



**SALVIA LEUCOPHYLLA / PURPLE LEAF SAGE**  
REMARKS: ATTRACTS BIRDS, BUTTERFLIES; MAY-JULY;  
PRUNE STEMS EVERY 1-2 YEARS; FRAGRANT  
MATURE SIZE: 3'H x 3'W



**CHITALPA TASHKENTENSIS 'PINK DAWN' / PINK DAWN CHITALPA BUSH**  
REMARKS: DECIDUOUS; ATTRACTS HUMMINGBIRDS AND BUTTERFLIES  
MATURE SIZE: 30'H x 30'W



**ALOE X 'BLUE ELF' / ALOE**  
REMARKS: POTTED ACCENT; SUCCULENT; YEAR-ROUND INTEREST  
MATURE SIZE: 2'H x 2'W



**DIETES BICOLOR / FORTNIGHT LILY**  
REMARKS: ATTRACTS BIRDS, BUTTERFLIES  
MATURE SIZE: 3'H x 3'W



**LAVANDULA DENTATA / FRENCH LAVENDER**  
REMARKS: ATTRACTS HUMMINGBIRDS; FRAGRANT;  
PRUNE MID-SUMMER, LATE FALL  
MATURE SIZE: 3'H x 3'W



**PENSTEMON SPECTABILIS / SHOWY PENSTEMON**  
REMARKS: ATTRACTS BIRDS, HUMMINGBIRDS, BUTTERFLIES;  
APRIL-JUNE SHOWY COLOR; REMOVE SPENT FLOWERS  
MATURE SIZE: 3'H x 3'W



**ZAUSCHNERIA CALIFORNICA / CALIFORNIA FUCHSIA**  
REMARKS: ATTRACTS BUTTERFLIES; LATE SUMMER/FALL  
MATURE SIZE: 1'H x 3'W



**PARKINSONIA HYBRID 'DESERT MUSEUM' / DESERT MUSEUM PALO VERDE**  
REMARKS: DECIDUOUS; GREEN THORNLESS TRUNK;  
SHOWY YELLOW BLOOM IN SPRING/SUMMER  
MATURE SIZE: 25'H x 25'W



**ARCTOSTAPHYLOS X 'SUNSET' / SUNSET MANZANITA**  
REMARKS: EVERGREEN BACKGROUND; ATTRACTS BIRDS, BUTTERFLIES  
MATURE SIZE: 2'H x 2'W



**DIPLOACUS PUNICEUS / RED MONKEYFLOWER**  
REMARKS: APRIL-JULY; ATTRACTS HUMMINGBIRDS, BUTTERFLIES  
MATURE SIZE: 2'H x 2'W



**LAVATERA MARITIMA / TREE MALLOW**  
REMARKS: EVERGREEN SCREEN  
MATURE SIZE: 6'H x 6'W



**RIBES SANGUINEUM GLUTINOSUM / RED FLOWERING CURRANT**  
REMARKS: ATTRACTS BIRDS, HUMMINGBIRDS; DECIDUOUS  
MATURE SIZE: 6'H x 6'W



**ARCTOSTAPHYLOS X 'EMERALD CARPET' / EMERALD CARPET MANZANITA**  
REMARKS: ATTRACTS BIRDS, BUTTERFLIES; PROVIDES FOOD/SHelter FOR BIRDS AND WILDLIFE  
MATURE SIZE: 1'H x 6'W



**QUERCUS AGRIFOLIA / COAST LIVE OAK**  
REMARKS: EVERGREEN; BIRDS AND BUTTERFLIES;  
PROVIDES WILDLIFE SHELTER  
MATURE SIZE: 65'H x 30'W



**ARTEMISIA CALIFORNICA 'MONTARA' / PROSTRATE CALIFORNIA SAGEBRUSH**  
REMARKS: EVERGREEN, FRAGRANT; PRUNE YEARLY; ATTRACTS BIRDS, BUTTERFLIES  
MATURE SIZE: 1.5'H x 4'W



**ERIOGONUM GRANDE RUBESCENS / RED BUCKWHEAT**  
REMARKS: ATTRACTS BUTTERFLIES  
MATURE SIZE: 2'H x 2'W



**LEYMUS CONDENSATUS 'CANYON PRINCE' / NATIVE BLUE RYE**  
REMARKS: EVERGREEN ACCENT; ORNAMENTAL GRASS  
MATURE SIZE: 3'H x 3'W



**RIBES SPECIOSUM / FUCHSIA FLOWERING GOOSEBERRY**  
REMARKS: ATTRACTS BIRDS, HUMMINGBIRDS; DECIDUOUS  
MATURE SIZE: 6'H x 4'W



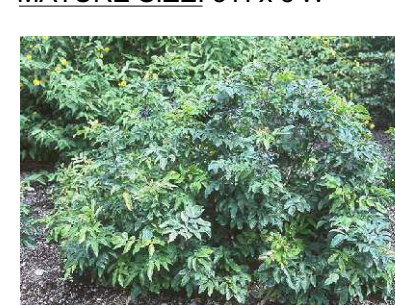
**BACCHARIS PILULARIS 'PIGEON POINT' / COYOTE BRUSH**  
REMARKS: ATTRACTS BUTTERFLIES; PRUNE YEARLY  
PROVIDES FOOD FOR BIRDS & WILDLIFE  
MATURE SIZE: 2'H x 8'W



**BOUGAINVILLEA X 'RASPBERRY ICE' / BOUGAINVILLEA**  
REMARKS: YEAR-ROUND COLORFUL ACCENT; ATTRACTS BUTTERFLIES  
MATURE SIZE: 3'H x 6'W



**ESCHSCHOLZIA CALIFORNICA / CALIFORNIA POPPY**  
REMARKS: ANNUAL COLOR; ATTRACTS BIRDS AND BUTTERFLIES  
MATURE SIZE: 1'H x 1'W



**MAHONIA AQUIFOLIUM 'COMPACTA' / COMPACT OREGON GRAPE**  
REMARKS: ATTRACTS BIRDS  
MATURE SIZE: 3'H x 3'W



**ROSMARINUS OFFICINALIS 'TUSCAN BLUE' / TUSCAN BLUE ROSEMARY**  
REMARKS: ATTRACTS BIRDS, BUTTERFLIES; FRAGRANT  
MATURE SIZE: 6'H x 4'W



**CEANOTHUS X 'JOYCE COULTER' / CEANOTHUS JOYCE COULTER**  
REMARKS: ATTRACTS BIRDS, BUTTERFLIES; FRAGRANT  
INFREQUENT WATERING  
MATURE SIZE: 3'H x 6'W



**CALLIANDRA CALIFORNICA / RED BAJA FAIRY DUSTER**  
REMARKS: SPECIMEN/SCREEN; YEAR-ROUND COLOR; ATTRACTS BUTTERFLIES, HUMMINGBIRDS; LIMIT PRUNING  
MATURE SIZE: 6'H x 6'W



**GALVEZIA SPECIOSA / ISLAND BUSH SNAPDRAGON**  
REMARKS: ATTRACTS HUMMINGBIRDS; SUMMER/FALL BLOOMING  
MATURE SIZE: 5'H x 5'W



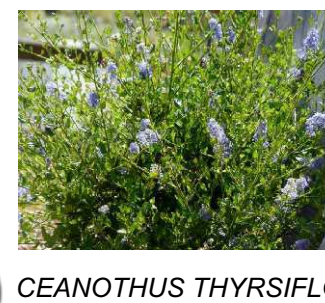
**MUHLENBERGIA LINDHEIMERI / LINDHEIMER'S MUHLY**  
REMARKS: EVERGREEN ACCENT; ORNAMENTAL GRASS  
MATURE SIZE: 5'H x 4'W



**SALVIA APIANA / WHITE SAGE**  
REMARKS: ATTRACTS BIRDS, BUTTERFLIES; FRAGRANT;  
NEEDS GOOD DRAINAGE, VERY LOW WATER  
MATURE SIZE: 4'H x 4'W



**SALVIA X 'GRACIAS' / CREEPING SAGE**  
REMARKS: ATTRACTS BIRDS, BUTTERFLIES; MAY  
MATURE SIZE: 2'H x 5'W



**CEANOTHUS THYRSIFLORUS 'SKYLARK' / SKYLARK CEANOTHUS**  
REMARKS: ATTRACTS BIRDS, BUTTERFLIES; FRAGRANT; EVERGREEN  
BACKGROUND; INFREQUENT WATERING  
MATURE SIZE: 5'H x 5'W



**GAURA LINDHEIMERI 'SISKIYOU PINK' / SISKIYOU PINK GAURA**  
REMARKS: PERENNIAL ACCENT  
MATURE SIZE: 3'H x 3'W



**MUHLENBERGIA RIGENS / DEER GRASS**  
REMARKS: EVERGREEN ACCENT; ORNAMENTAL GRASS  
MATURE SIZE: 5'H x 4'W



**SALVIA CLEVELANDII 'POJO BLUE' / CLEVELAND SAGE**  
REMARKS: ATTRACTS BIRDS, BUTTERFLIES; FRAGRANT  
MATURE SIZE: 5'H x 5'W



**VITIS CALIFORNICA 'ROGER'S RED' / CALIFORNIA WILD GRAPE**  
REMARKS: ATTRACTS BIRDS AND BUTTERFLIES; DECIDUOUS  
MATURE SIZE: TO 30'

# NATIVE / HABITAT LANDSCAPE PHOTOS

## TYPICAL WATER SMART HOME LANDSCAPING PLAN

### SAN DIEGO

SCHMIDT DESIGN GROUP, INC.

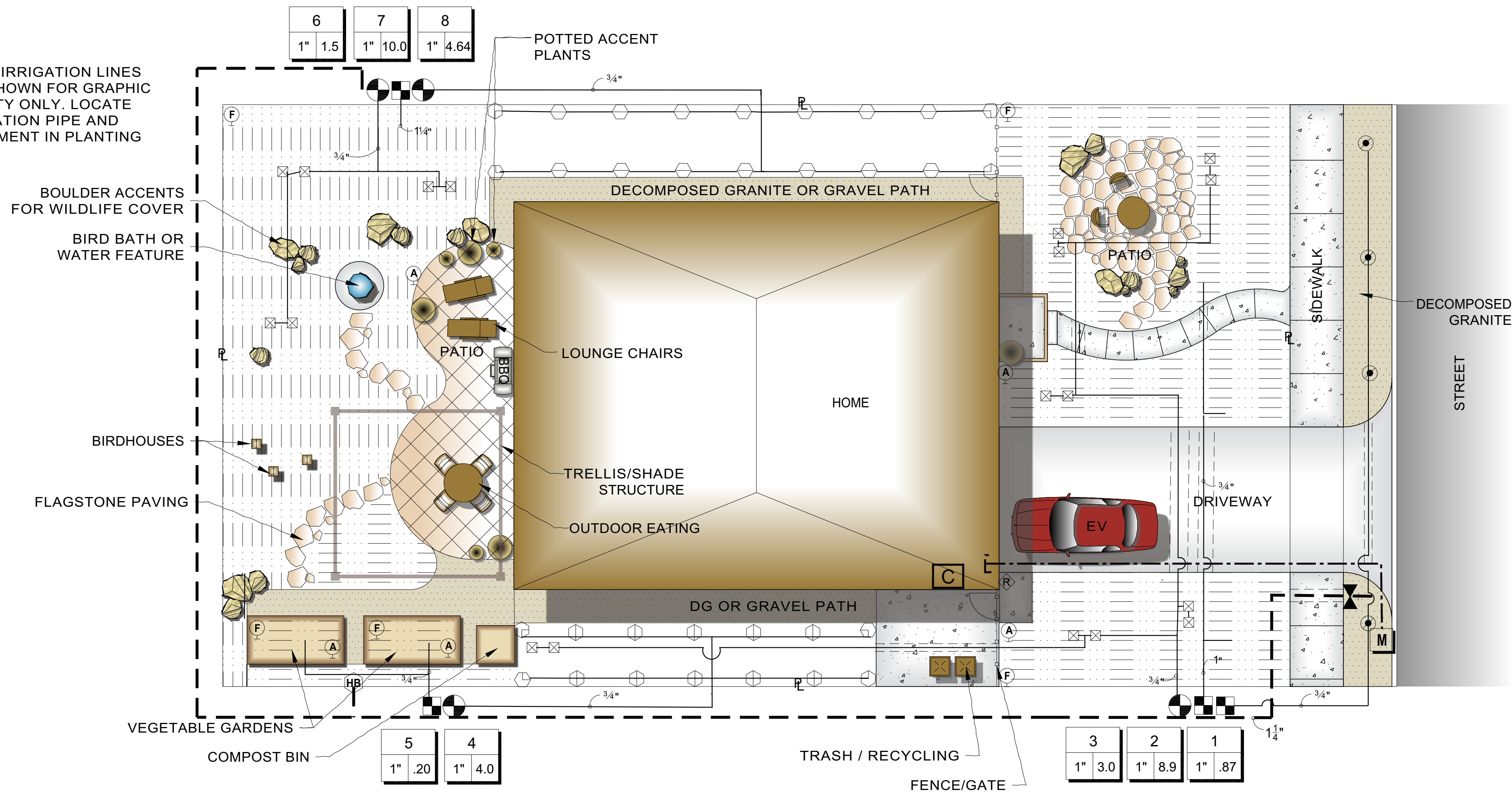
BALANCING ARTISTIC EXPRESSION IN DESIGN WITH ENVIRONMENTAL SENSITIVITY

2655 Fourth Avenue, San Diego, CA 92103  
telephone (619) 236-1462 facsimile (619) 236-8792  
www.schmidtsgroup.com

Lic. CA 2138, NV 219, AZ 34139



NOTE: IRRIGATION LINES ARE SHOWN FOR GRAPHIC CLARITY ONLY. LOCATE IRRIGATION PIPE AND EQUIPMENT IN PLANTING AREAS



IRRIGATION LEGEND

SYMBOL	MANUFACTURER/MODEL/DESCRIPTION
	Toro O-T-5702-6P COM 8 Series or Equal Shrub Spray, 6" popup with check valve, Precision Series spray nozzles.
	Toro 570S-FB-25-PC or Equal Flood Bubbler for Trees
	Toro T-PR25-9 or Equal Pressure Regulating 9-Outlet Drip Manifold for connection to 1/4" Micro-tube & 1gph emitters to plants, 2 per plant. Below grade in 6" plastic valve box. Tubing 2" minimum below grade to plants.
	Area to Receive Dripline Toro T-PCB1810-12 (12) or Equal Landscape Dripline, 5/8" with pressure compensating 1.02gph emitters at 12" o.c. dripline Dripline lateral rows spaced at 12" apart, with emitters offset for triangular pattern. Run line 2" below grade.
	Toro EZF-29 or Equal Electric Remote Control Valve with Atmospheric Vacuum Breaker (AVB) with flow control
	Toro DZK-EZF-075-LF or Equal Drip zone kit. 3/4" EZ-Flo Plus AVB valve, filter, low-flow regulator and fittings
	Spears True Union 2000 Ball Valve or Equal PVC, 1/2" to 4", same size as pipe
	Toro T-FCH-H-FIPT or Equal Flush valve, plumbed to flush manifold at low point
	Toro T-YD-500-34 or Equal Dripline air relief valve plumbed to drip tubing at each high point
	Hose Bibb
	Irritrol Smart Dial SD900-INT or Equal ET-based Controller, 9 stations, indoor, with plastic cabinet
	Irritrol RS1000 or Equal Wireless Rain Sensor. Mount as noted by manufacturer, use controller power.
	Water Meter
	Water Service Line from Meter
	Irrigation Lateral Line: PVC Schedule 40 and Class 200
	Irrigation Mainline: PVC Schedule 40 and Class 315
	Pipe Sleeve under Hardscape Paving: PVC Schedule 40 Typical pipe sleeve for irrigation pipe. Pipe sleeve size shall allow for irrigation piping and their related couplings to easily slide through sleeving material. Extend sleeves 18 inches beyond edges of paving or construction.
	Valve Callout
	Valve Number
	Valve Flow
	Valve Size

Resources for Irrigation Components and Smart Controllers (call for store hours)

Ewing	Ewing	Ewing
Chula Vista 591 C Street, Suite B Chula Vista 91910 619.426.5200	El Cajon 1923 John Towers Ave. El Cajon, CA 92020 619.562.3300	San Diego 7151-A Ronson Road San Diego, CA 92111 858.576.9550
Chula Vista 375 Trousdale Dr. Chula Vista, CA 91910 619.691.9700	El Cajon 435 N. Marshall Ave. El Cajon, CA 92020 619.440.4703	San Diego 5805 Keaney Villa Rd. San Diego, CA 92123 858.560.6611
Chula Vista 2202 Venus Street San Diego, California 92154 619.575.2222	San Diego 7366 Engineer Road San Diego, California 92111 858.278.5151	
El Cajon 1073 N. Marshall El Cajon, CA 92020 619.562.8777		

WATER SCHEDULE FOR JULY

Native/Habitat Typical Water Smart Home Landscape Plan for San Diego

Schedule based on the following design parameters  
3/4" water meter : 22.5 GPM "Capacity"

FORMULA: T= (60 X ET X PF) / (PR X IE) X 7 / water days per week where:

T = IRRIGATION TIME (in minutes)  
ET = Daily Evapotranspiration Rate = (Peak ET for Month of July)  
PF = CROP COEFFICIENT (kc)  
PR = PRECIPITATION RATE  
IE = IRRIGATION EFFICIENCY

	minutes per day	ET	PF	PR	IE	water days	water days per week	Minutes per run day
EMITTER DRIP AREA (Low water)=	60.0	0.220	0.2	0.3	0.8	7	1	77
INLINE DRIP AREA (Low water)=	60.0	0.220	0.2	1.56	0.8	7	1	15
SHRUB SPRAY (Low water)=	60.0	0.220	0.2	1.0	0.55	7	2	17
TREE BUBBLER (Low water)=	60.0	0.220	0.2	1.93	0.8	7	1	12
SHRUB SPRAY (Moderate water)=	60.0	0.220	0.5	1.0	0.55	7	2	42
INLINE DRIP AREA (High water)=	60.0	0.220	0.8	1.56	0.8	7	3	20

CONTROLLER (8 Stations)	GPM	Station	PR	PF	Run Time
Emitter Drip Area (Low)	0.87	1	0.30	0.2	77
Inline Drip Area (Low)	8.9	2	1.56	0.2	15
Tree Bubbler (Low)	3.0	3	1.93	0.2	12
Shrub Spray (Low)	4.0	4	1.00	0.2	17
Inline Drip Area (High)	0.2	5	1.56	0.8	20
Tree Bubbler (Low)	1.5	6	1.93	0.2	12
Inline Drip Area (Low)	10.0	7	1.56	0.2	15
Shrub Spray (Moderate)	4.6	8	1.00	0.5	42

4.1 AVG.

TOTAL MINUTES PER DAY =	209.1 minutes
TOTAL HOURS PER DAY =	3.48 hrs

Landscape Irrigation Water Analysis

Native/Habitat Typical Home Landscape Plan for San Diego	MAWA	Estimated Total Water Usage	Hydrozones				Total Usage
			High Water Use Vegetable Garden with Drip	Moderate Water Use Shrub Planting with Spray	Low Water Use Shrub Planting with Spray	Low Water Use Shrub Planting with Drip	
Total Landscape Area (Square Feet)	2,958.00	Hydrozone Area S.F.	73.00	412.50	242.00	2,230.50	
Reference Evapotranspiration (Eto)	57.33	Irrigation Efficiency (IE)	Drip 0.80	Spray 0.50	Drip 0.80	Drip 0.80	
ET Adjustment Factor (ETAF)	0.7	Ref ET (Eto)	57.33	57.33	57.33	57.33	
Conversion Factor (inches to Gallons)	0.62	Plant Factor / Kc	0.8	0.5	0.2	0.2	
Eto x .62 x (ETAF x Land Area + (.3 x SLA))		Conversion Factor	0.62	0.62	0.62	0.62	
Total Gallons per year	73,599	Eto x .62 x (PF x HA/IE)	2,595	14,662	2,150	19,821	
						39,228	

Anticipated evapotranspiration rates for the site are based on historical averages. This data is collected from C.I.M.I.S. (California Irrigation Management Information System)

Data from the C.I.M.I.S. Station # 153 in Escondido was used. IE = Drip/ Bubblers/ Micro Spray at .8; Rotors at .7; Spray at .5

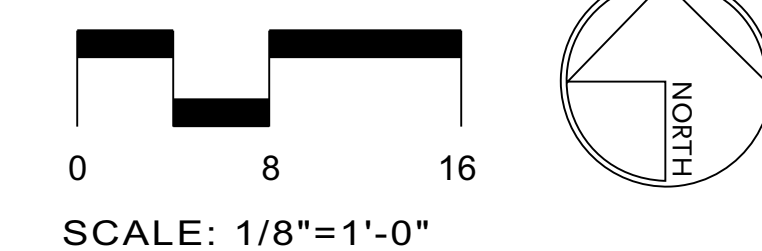
SCHMIDT DESIGN GROUP, INC.

BALANCING ARTISTIC EXPRESSION IN DESIGN WITH ENVIRONMENTAL SENSITIVITY

2655 Fourth Avenue, San Diego, CA 92103  
telephone (619) 236-1462 facsimile (619) 236-8792  
www.schmidtsgroup.com

Lic. CA 2138, NV 219, AZ 34139

NATIVE / HABITAT IRRIGATION PLAN  
TYPICAL WATER SMART HOME LANDSCAPING PLAN  
SAN DIEGO



Sheet 4 of 4  
Date: June 10, 2010