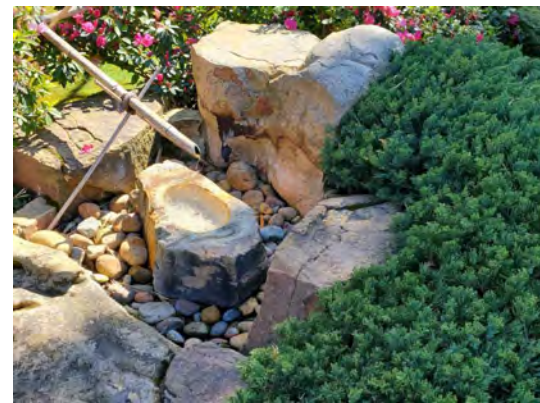


LEGEND

- 1 Entry Arbor with Vines
- 2 Water Basin
- 3 Dry River Bed
- 4 Bonsai Pots
- 5 Stone Lanterns
- 6 Bridge Crossing
- 7 Compost Bins
- 8 Deck with Seating + Vine Trellis
- 9 Rock Garden
- 10 Planted Island
- 11 Trash and Recycle Bins
- 12 Screening Plants
- 13 Stepping Stones
- 14 Rock Mulch
- 15 Decomposed Granite



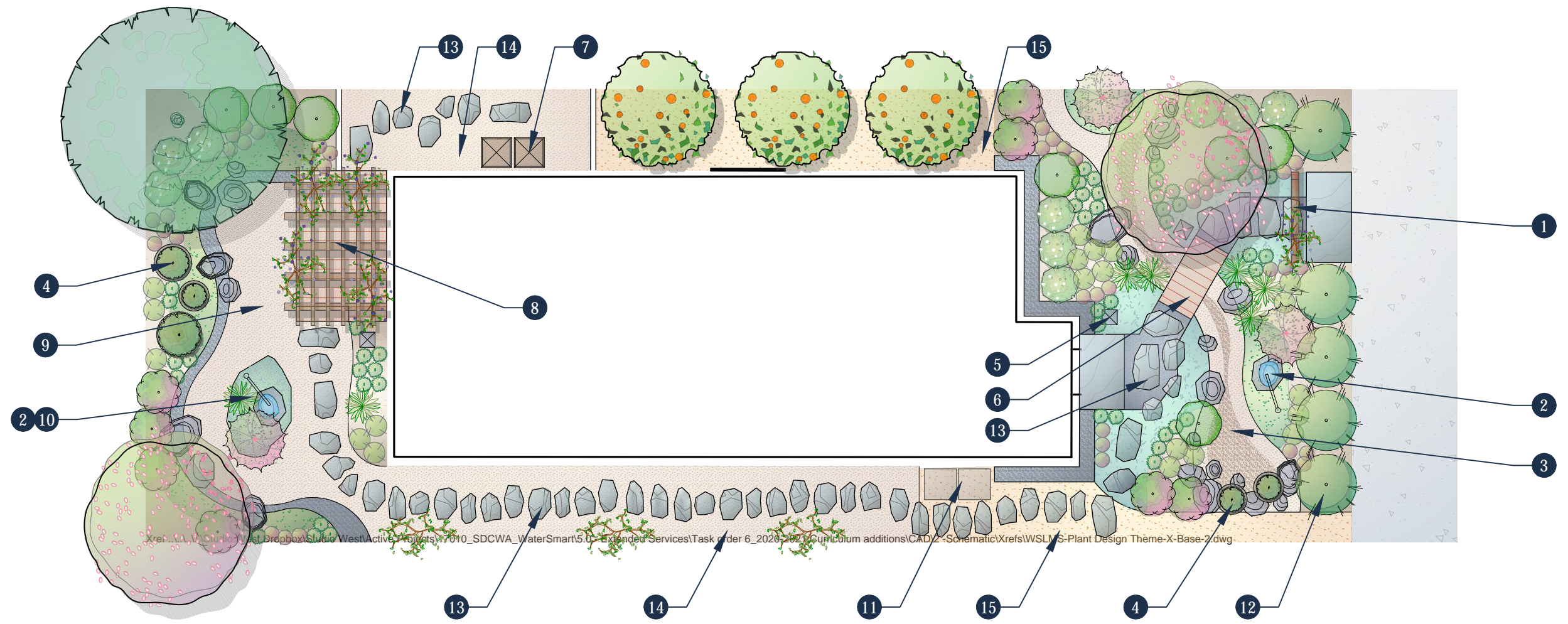
Rock Garden + Planted Island



Water Basin



Bridge Crossing

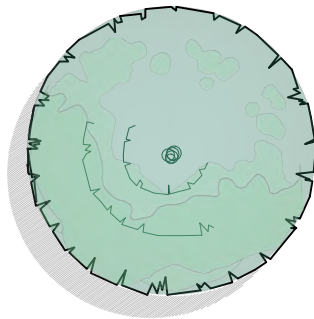


PLANT LEGEND (Hydrozone data shown is based on WUCOLS IV, Region 3. Plants included in this legend can be found in the WaterSmart Meditation Garden Effect Plant Palette)

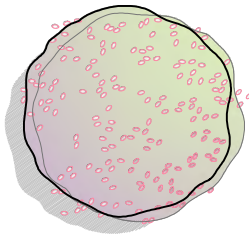
SYMBOL	SCIENTIFIC NAME COMMON NAME	HYDROZONE	QTY.
--------	-------------------------------	-----------	------

SYMBOL	SCIENTIFIC NAME COMMON NAME	HYDROZONE	QTY.
--------	-------------------------------	-----------	------

TREES

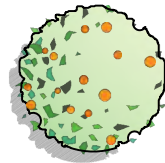


AGONIS FLEXUOSA | PEPPERMINT TREE L 1

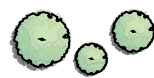


CERCIS C. 'FOREST PANSY' | EASTERN REDBUD M 2

SPECIALTY TREES



FRUIT TREES SUCH AS
CITRUS JUNOS 'YUZU' | YUZU LIME
DIOSPYRUS VIRGINIANA | PERSIMMON
ERIOBOTRYA JAPONICA | LOQUAT
PYRUS COMMUNIS | EDIBLE PEAR M 3



BONSAI ACCENTS N/A 5

SHRUB



BERBERIS T. 'CRIMSON PYGMY' | DWARF JAPANESE BARBERRY L 41



DIETES GRANDIFLORA | FORTNIGHT LILY L 9



ELEAGNUS PUNGENS 'FRUITLANDII' | SILVERBERRY L 5



GREVILLEA 'SCARLET SPRITE' | SCARLET SPRITE GREVILLEA L 3



IRIS DOUGLASIANA | DOUGLAS IRIS L 47



JUNIPERUS SABINA | SAVIN JUNIPER L 7



MYRTUS COMMUNIS 'COMAPCTA' | DWARF MYRTLE L 20



NANDINA DOMESTICA | HEAVENLY BAMBOO L 8

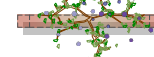


SYMPHORICARPOS ALBUS | SNOWBERRY L 9

VINE

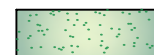


CLEMATIS LASIANTHA | PIPESTEM CLEMATIS VL 3



WISTERIA SINENSIS | CHINESE WISTERIA M 5

GROUND COVER



JUNIPERUS HORIZONTALIS 'WILTONII' | CREEPING JUNIPER L 93 SF



OPHIPOGON JAPONICUS | MONDO GRASS M 107 SF